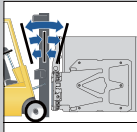


载荷缓冲装置  
Load Cushion™



门架升降系统的蓄能装置，可吸收振动并降低货物搬运作业所需的夹持力。现有475ml(1pt)和950ml(1qt)的尺寸规格可选。  
Hoist System Accumulator that absorbs shocks and reduces the clamp force required to handle the load. Available in 475 ml(1 pt) and 950 ml(1 qt) sizes.

门架倾角控制装置  
Tilt Control



能自动控制叉车门架与属具的倾角，确保夹板与货物对齐。  
Automatically controls the angle of the mast and attachment, aligning pad with the load.

双向倾角控制/Two-way Tilt Control

容量式夹紧力控制装置  
Volumetric Force Control(VFC)



VFC系统能根据货物容积大小自动调节夹紧力。它可用于降低因夹紧力过大而造成的货物破损，并根据计算出的货物尺寸得出搬运货物所需的最小夹紧力。操作者无需手动调节夹紧力大小，整个过程完全自动化。  
VFC system automatically adjusts clamping pressure based on volume of the load. This option is designed to reduce damage caused by excessive force, the VFC calculates the size of load and will clamp with the least amount of force. The operator does not need to judge the clamping force with manual controls, it is completely automatic.

四点式夹紧力测试仪  
4-Point Force Distribution Tester



采用便携式设计，通过四个夹板对夹紧力进行可靠地测量。标定杆可确保感应臂长度相同，从而获得准确的测量值。  
Portable design measures clamp force in 4 quadrants of the contact pad for a reliable measurement. Calibration bar included to ensure equal sensor arm lengths and accurate pressure measurements.

触屏式夹紧力控制装置TFC™  
TFC™ - Touch Force Control System



TFC是一种交互式系统，并配有便于操作的触摸显示屏，可应用于需要控制夹紧力和压力的工况。  
TFC™ is an interactive and easy-to-use touch screen system that works in applications where regulating clamp force and pressure control is required.

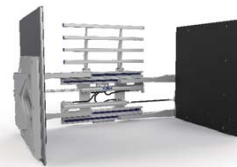
J系列纸箱夹可选件  
J-Series Clamp Options

- 定制张臂范围和框架宽度。
- 定制夹臂尺寸和夹板类型。
- 特殊工况下所需的夹板（尺寸和表面材质）。
- 搬运松散货物时，框架护挡板能起到额外的保护作用。
- 适配各种ISO挂装形式，包括ISO 3级挂装和快装型。
- 单臂可动式。
- 适配电动叉车并带有正反反馈功能的阀体可加快夹臂的运动速度。
- 可提供外置侧移式型号。
- 可根据叉车附加油路第三、四联左右侧布置的情况提供镜像翻转的控制阀油口布置型式。
- 特殊工况下的非标定制产品。
- Custom opening ranges and frame widths.
- Custom arm lengths, heights and pad surfaces.
- Application-specific contacts pads (sizes & surfaces).
- Frame bumper for extra protection when handling loose loads.
- Various ISO mounting options including class III and quick-disconnect features.
- Independent arm control.
- Regenerative valve for increased arm speed on low flow electric trucks.
- External sideshift available.
- Alternate valve configurations for left hand or right hand third and fourth function hydraulic installation.
- Application-specific customization.

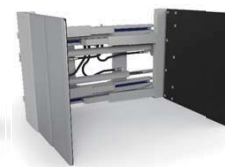
J系列纸箱夹/白色家电夹  
J-Series Carton Clamps / White Goods Clamps



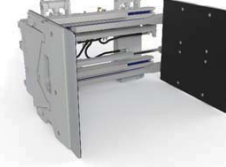
多种对应型号满足多种工况需求。  
Not all clamps are created equal.



纸箱夹  
承载能力最大可达2000kg  
CARTON CLAMP  
Capacities up to 2200kg



带剃刀型挡货架纸箱夹  
承载能力最大可达910kg  
RAZORBACK CARTON CLAMP  
Capacities up to 910kg



前倾式纸箱夹  
承载能力最大可达1200kg  
TIPPING CARTON CLAMP  
Capacities up to 1200kg



双倍加宽型纸箱夹  
承载能力最大可达1137kg  
DOUBLE WIDE CARTON CLAMP  
Capacities up to 1137kg



WGF型白色家电夹  
承载能力最大可达1578kg  
WGF CARTON CLAMP  
Capacities up to 1578kg



WGS型白色家电夹  
承载能力最大可达1578kg  
WGS CARTON CLAMP  
Capacities up to 1578kg



官方微信号 天猫旗舰店

高效搬运: 每种纸箱夹均为特定工况而设计, 性能优越

Efficient Handling: Each Carton Clamp is designed to do a particular job and do it well.

无论你是搬运消费性纸品, 家电, 消费性电子产品, 红酒, 包装类食品(罐装或盒装), 化工产品还是塑料, 卡斯卡特的纸箱夹类产品都能提供一种解决方案。它们在严苛的工况下依旧经久耐用, 并具有多用途且便于维修。纸箱夹型号包括CCS, CCD, CRS和CCU。

Whether you're handling consumer paper products, appliances, consumer electronics, wine, packaged foods (caned or boxed), chemicals or plastics, Cascade clamps offer a solution. They're durable enough for the toughest conditions, versatile and easy to service. Carton Clamp models include the CCS, CCD, CRS and CCU models.

### 可靠性更高 Improved Reliability

强度更高的臂基铸件  
With stronger built corner castings

### 降低产品破损 Reduced Product Damage

挡货架前端面与夹臂滑杆位于同一平面内, 可确保其接触到货物。(可选项)  
Load backrest design with 4 point mounting is in the same plane as the arm bars for even contact with the load. (Optional)

### 减少维护保养时间 Reduced Maintenance

选择适合于托盘搬运的夹板可延长夹板寿命。(可选项)  
On contact pad for pallet handling extending pad lift. (Optional)

图示为纸箱夹型号  
Carton Clamp Model Shown

### 质量保证 Guaranteed

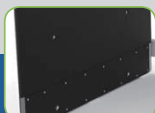
卡斯卡特可为UHMW滑动支承提供长达10,000小时或36个月质保服务期限。  
Cascade will provide trouble free service on UHMW bearings up to 10,000 hours or 36 months.

### 操作便捷 Ease of Operation

薄型夹臂前端带有斜度塑料导块, 可便捷的楔入紧密堆垛货物缝隙中。  
Thin arm profile with tapered leading edge for manipulating tight loads between stacks.

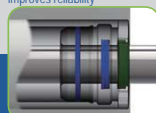
### 共同特征和好处: Common Clamp Features & Benefits:

安全搬运  
Secure handling of loads



可左右交替更换使用的橡胶垫铝制夹板  
Reversible Rubber Faced Aluminum Contact Pad

减少液压油泄漏, 提高可靠性  
Reduce hydraulic leaks and improves reliability



经久耐用的密封圈  
Durable Seals

经久耐用且免维护的滑动支承  
Durable bearings with less maintenance



全长的UHMW滑动支承  
UHMW Full-Length Bearings

确保安全准确地挂装  
Assure secure and precise mounting



真正的中央定位块  
True Centering Key

液压系统效率更高  
Improved hydraulic efficiency



带夹紧, 侧移和张开功能的减压阀  
Clamp, Sideshift & Open Relief Valve

夹紧力分布更优化

Superior Clamp Force Distribution

WG型白色家电夹的夹紧力沿夹板分布得更均匀更优化, 最大限度降低产品破损。

The WG Models distribute clamp force more evenly along the pad surface, reducing damage.

### 更加经久耐用 Improved Durability

高强度钢结构框架性能更加安全可靠。  
High strength steel frame for optimal reliability

### 视野更好 Visibility

便于使用  
For ease of use

图示为白色家电夹型号  
White Goods Model Shown

白色家电夹型号

WG Models

专为白色家电, 仓储行业, 饮料行业, 家用电器和电子行业而设计, 白色家电夹实现了无托盘作业, 提高了仓储利用率。性能特征和可选项的多样性实现了其对货物进行更精准的搬运, 提高生产率并降低货物破损。

Designed for the white goods, warehousing, beverage, appliance and electronics industries, the WG Model clamps allow palletless handling, which improves warehouse space utilization. The variety of features and options result in more precise handling, enhanced productivity and less product damage.

### 夹紧力分布更优化 Optimal Force Distribution

搬运更高的货物时, 三指状的夹臂设计使夹紧力的分布更均匀, 降低货物破损。(仅限WG型号)  
3-Finger Arm designed to spread the clamp force upward for optimal distribution when handling taller loads, preventing damage. (WG models only)

### 更精准地搬运 More Precise Handling

调节块有六个支点, 便于调整夹板与稳定臂之间的间隙。(仅限WG型号)  
Adjusta-Block has six adjustment points that easily facilitate moving the position of the pad relative to the stabilizer. (WG models only)

### 降低产品破损 Reduced Product Damage

调节块有六个支点, 便于调整夹板与稳定臂之间的间隙。(仅限WG型号)  
Adjusta-Block has six adjustment points that easily facilitate moving the position of the pad relative to the stabilizer. (WG models only)

### WGF型

#### WGF Model

- 拥有可全深度或用指尖对货进行夹持的多种不同结构型式。
- 左夹臂为单铰接式或右夹臂为单铰接式, 同时左右夹臂都配有弹性自调式夹板和调节块。
- Single, full depth or tip handling for many different configurations.
- Left single articulating arm/Right single articulating arm with Flexipads/ Adjusta-Block RH & LH.

### WGS型

#### WGS Model

- 可对单层、重载货物进行全深度夹持, 可作为常用的货物搬运解决方案。
- 左夹臂为单铰接式或右夹臂为单铰接式, 同时左右夹臂都带有垫片。
- Single and full depth heavy loads for general handling solutions.
- Left single articulating arm/Right single articulating arm/with shims RH & LH.



J系列纸箱夹拥有高效的液压系统, 可将能耗降到最低的同时将性能最大化。The J-Series Carton Clamps have an efficient hydraulic system which minimizes energy consumption and maximizes performance.

纸箱夹和白色家电夹拥有共同的优势  
Common benefits for both Carton Clamps and White Good Models

提高作业效率, 降低产品破损  
Increase productivity, reduce product damage